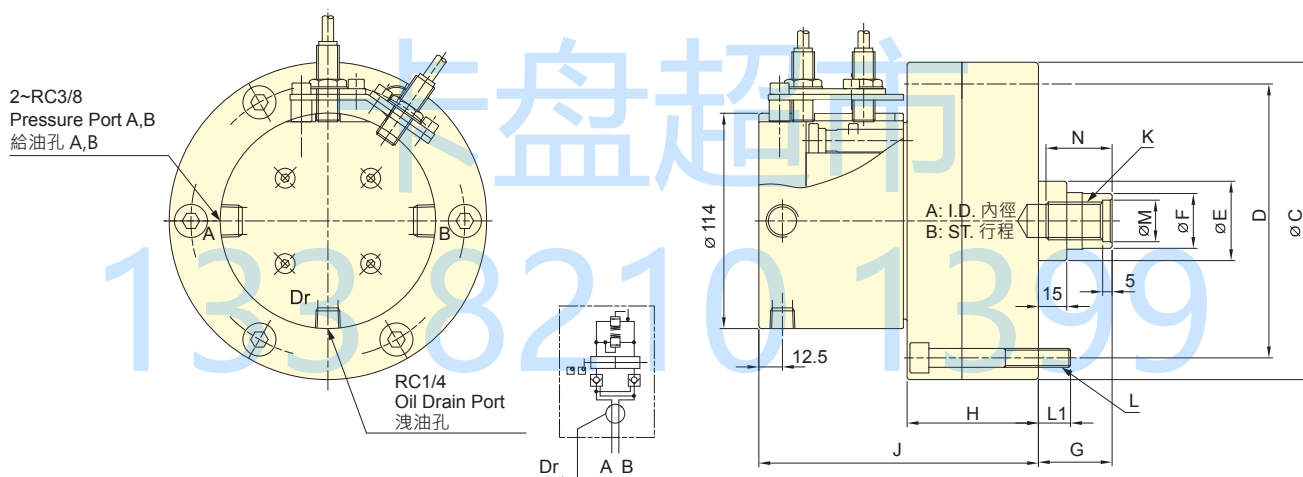


- 高速，輕量整合型迴轉油壓缸。
- 內建逆止閥自鎖機構，洩壓閥及行程控制近接開關。
- 安裝時可由後端鎖固之。
- For short form, light weight and high speed rotary cylinder.
- Built-in safety check valves, pressure relief valves and proximity sensor.
- Can screw it from the rear end of the cylinder when mounting.
- 洩油孔配管務必單獨接回油壓槽，以避免產生背壓。
- The drain port should be independently connected to oil tank to avoid back pressure.



保留規格修改的權利
Subject to technical changes

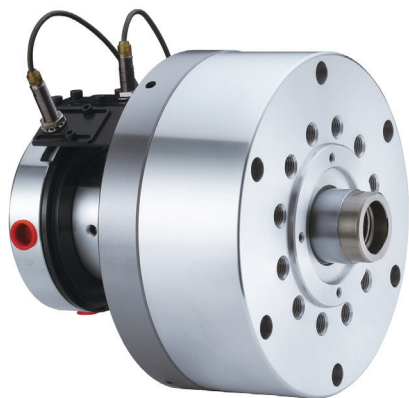
技術規格 SPECIFICATIONS

型號 Model	活塞面積 Eff. piston area		行程 Piston stroke	最高迴轉數 Max. speed	最高使用壓力 Max. pressure	I Moment of inertia	重量 Weight
	押側 (Extend) cm ²	拉側 (Retract) cm ²					
RE-110	92.7	87.9	20	6000	3.5(35)	0.02	6.9
RE-120	110.8	106	21	6000	4.0(40)	0.03	8.8
RE-130	130.4	123.1	30	6000	4.0(40)	0.03	9.1

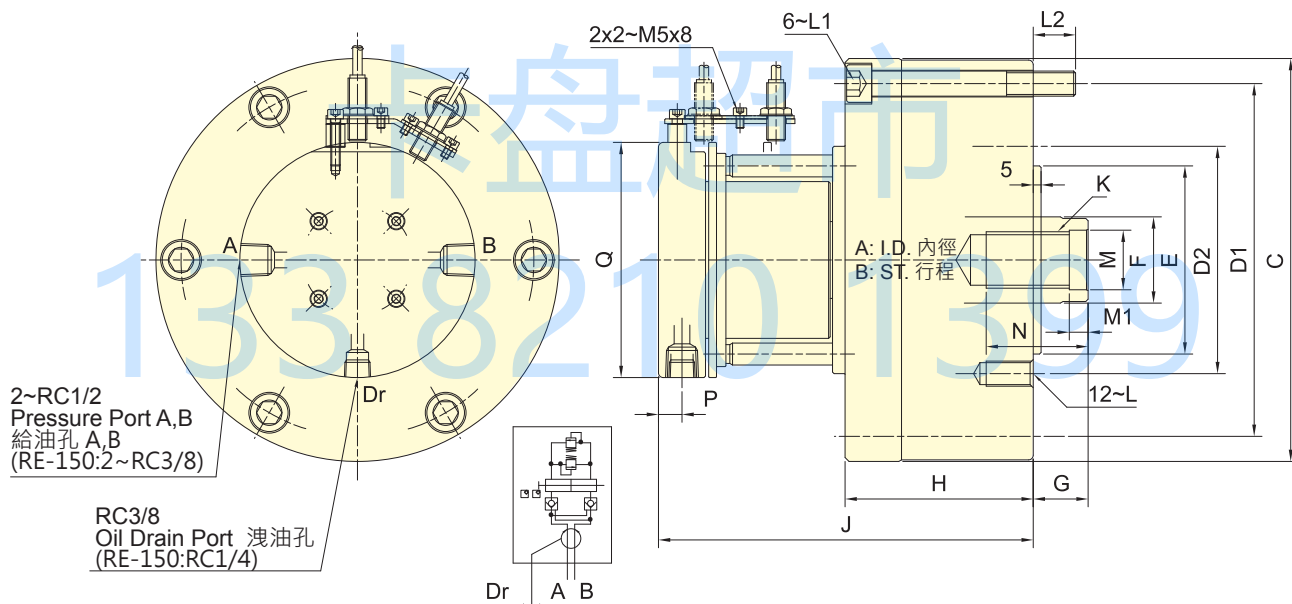
外型尺寸 DIMENSIONS

Model	A	B	C (h7)	D	E	F	G max.	G min.	H	J	K	L	L1	M (H8)	N
RE-110	110	20	145	128	42	29	60	40	66	146	M20x2.5	6~M8x70	12	22	35
RE-120	120	21	168	145	42	29	60	39	69.5	148	M20x2.5	6~M10x75	17	22	35
RE-130	130	30	168	150	50	33	60	30	79.5	158	M24x3.0	6~M10x85	17	27	40

近接開關型式: Model IFS287(IFM) DC 10-30V 100mA NPN • Proximity sensor: Model IFS287(IFM) DC 10-30V 100mA NPN .



- 高速，輕量整合型迴轉油壓缸，特別適合使用於立式車床。
- 內建逆止閥自鎖機構，洩壓閥及行程控制近接開關。
- 安裝時可由後端鎖固之。
- For short form, light weight and high speed rotary cylinder, suitable for vertical lathe.
- Built-in safety check valves, pressure relief valves and proximity sensor.
- Can screw it from the rear end of the cylinder when mounting.
- 洩油孔配管務必單獨接回油壓槽，以避免產生背壓。
- The drain port should be independently connected to oil tank to avoid back pressure.



保留規格修改的權利
Subject to technical changes

技術規格 SPECIFICATIONS

型號 Model	活塞面積 Eff. piston area		行程 Piston stroke	最高迴轉數 Max. speed	最高使用壓力 Max. pressure	I Moment of inertia	重量 Weight
	伸側 (Extend) cm ²	拉側 (Retract) cm ²					
RE-150	174.4	160.8	30	5500	4.0 (40)	0.06	14.9
RE-200K	292.4	274.9	35	4000	4.0 (40)	0.19	29.1
RE-200L	292.4	265.4	50	4000	5.0 (50)	0.21	30.4
RE-250	465.2	438.2	60	2000	5.0 (50)	0.43	47.2

外型尺寸 DIMENSIONS

Model	A	B	C	D1	D2	E (h7)	F	G max.	G min.	H	J	K	L	L1	L2	M (H8)	M1	N	P	Q
RE-150	150	30	205	180	130	110	45	60	30	99	177.5	M30x3.5	M12x24	M12x105	18.5	32	10	50	12.5	114
RE-200K	195	35	257	225	145	120	55	73	38	120	239	M36x4.0	M16x30	M16x130	27	38	12	65	15	150
RE-200L	195	50	257	225	170	125	65	80	30	135	254	M42x3.0	M16x30	M16x145	27	45	12	65	15	150
RE-250	245	60	307	275	220	160	65	85	25	165	280	M42x3.0	M20x35	M16x175	28	45	12	65	15	150

近接開關型式 : Model IFS287(IFM) DC 10-30V 100mA NPN • Proximity sensor : Model IFS287(IFM) DC 10-30V 100mA NPN .