

SD-E Mega-Bore Short body Open-Center Hydraulic Cylinder(Europe standard)

大通孔短体中空液压缸 (欧洲标准)



产品特点

低泄漏量, 使液压缸发热量最小化
结构紧凑, 长度短, 实现安装空间最小化
中心通孔设计

主要技术

部分尺寸按照欧洲标准设计

Application / Customer's Benefit

Low drain, Ultra slim open-center cylinder

Technical features

The low drain reduce the heating generated by Hyd. unit

产品规格 / SPECIFICATIONS

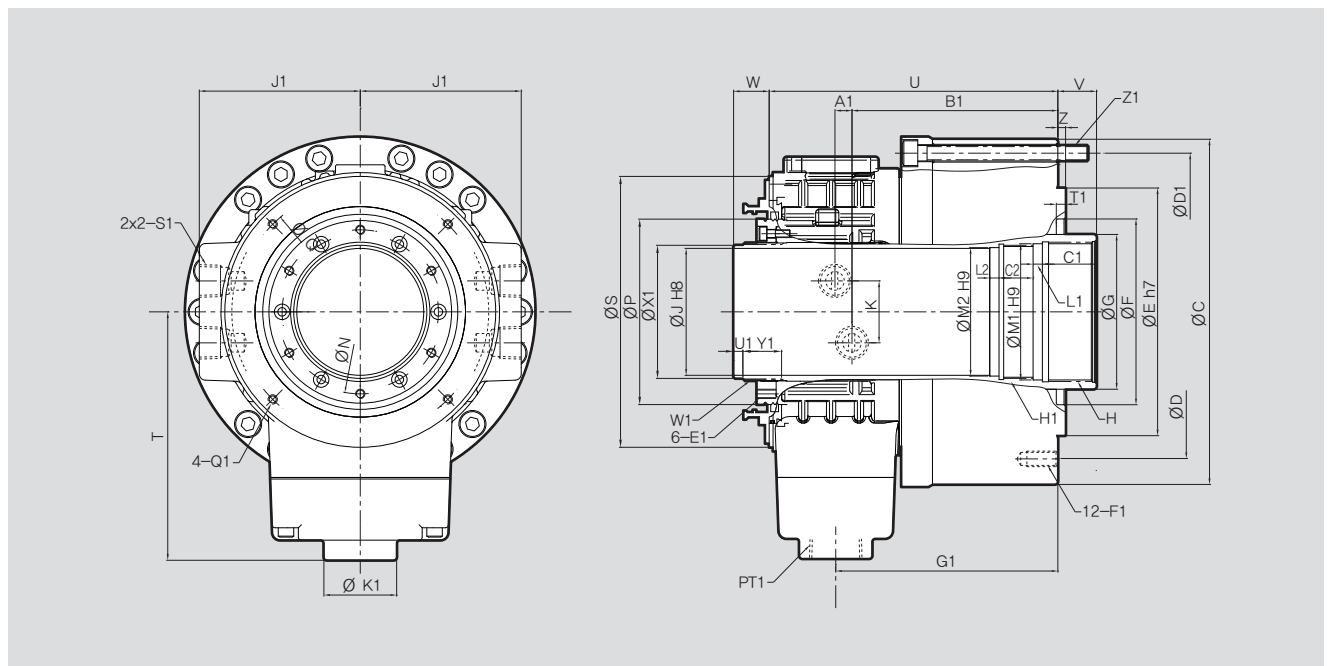
| | | SD-13546E | SD-15452E | SD-16567E | SD-17577E | SD-18582E | SD-19586E | SD-20595E | SD-21511E |
|--|-------------------------|-----------|-----------|-----------|-----------|-----------|-----------|------------|------------|
| 通径 [mm] | Available I.D. | 46.5 | 52.5 | 67.5 | 77 | 82 | 86.5 | 95.5 | 110.5 |
| 活塞直径 [mm] | Piston Dia. | 132 | 151 | 165 | 177 | 185 | 190 | 205 | 220 |
| 活塞行程 [mm] | Piston Stroke | 25 | 25 | 29 | 29 | 30 | 34 | 34 | 35 |
| 活塞推力 Push [kN(kgf)] | Piston Force (Push) | 47(4800) | 62(6285) | 67(6863) | 80(8100) | 85(8700) | 90(9200) | 105(10700) | 115(11700) |
| 活塞推力 Pull [kN(kgf)] | Piston Force (Pull) | 44(4500) | 57(5850) | 62(6351) | 73(7400) | 79(8100) | 83(8500) | 95(9700) | 107(10900) |
| 最大工作压力 [MPa(kgf/cm ²)] | Max. Operating Pressure | 4.5(45) | 4.5(45) | 4.5(45) | 4.5(45) | 4.5(45) | 4.5(45) | 4.5(45) | 4.5(45) |
| 允许的最大最大转速 [min ⁻¹] | Max. r.p.m. | 7000 | 6200 | 5600 | 5000 | 4800 | 4500 | 4000 | 3600 |
| 惯性力矩 [N · m ² (kg · m ²)] | Moment of inertia | 0.03 | 0.045 | 0.07 | 0.097 | 0.11 | 0.13 | 0.17 | 0.28 |
| 重量 [kg] | Weight | 11 | 14 | 18 | 23 | 26 | 27 | 29 | 40 |
| 总 Leak 量 [ℓ/min] | Total Leakage | 2.5 | 3 | 3.2 | 3.5 | 3.5 | 4 | 5 | 7 |

※ 允许的最大转速以实测值为准。

※ 尺寸与规格可能不事先预告即作变更。

※ Maximum turning speed is based upon actual measurement.

※ Specifications are subject to change without notice.



※ 参照右侧各产品尺寸

※ See the product dimension Table on the right.

产品尺寸 / DIMENSIONS

| | SD-13546E | SD-15452E | SD-16567E | SD-17577E | SD-18582E | SD-19586E | SD-20595E | SD-21511E |
|-----------|-----------|-----------|-----------|-----------|-----------|-----------|-----------|-----------|
| ΦC | 162 | 182 | 197 | 214 | 223 | 228 | 245 | 266 |
| ΦD | 130 | 165 | 180 | 195 | 205 | 210 | 227 | 240 |
| ΦD1 | 147 | 165 | 180 | 195 | 205 | 210 | 227 | 240 |
| ΦE (标准直径) | 130 | 140 | 160 | 160 | 168 | 180 | 210 | 210 |
| ΦF | 76 | 85 | 120 | 120 | 120 | 120 | 130 | 160 |
| ΦG | 61 | 70 | 85 | 95 | 100 | 105 | 115 | 130 |
| H | M55x2.0p | M60x2.0p | M75x2.0p | M85x2.0p | M90x2.0p | M112x2.0p | M105x2.0p | M120x2.0p |
| H1 | M50x1.5p | M55x2.0p | M72x1.5p | M80x2.0p | | M90x2.0p | M100x2.0p | M115x2.0p |
| ΦJ | 46.5 | 52.5 | 67.5 | 77 | 82 | 86.5 | 95.5 | 110.5 |
| K | 36 | 36 | 40 | 40 | 40 | 40 | 40 | 48 |
| N | 64 | 76 | 92 | 102 | 106 | 112 | 124 | 139 |
| ΦP | 78.8 | 89.8 | 105.8 | 115.8 | 119.8 | 125.8 | 137.8 | 160 |
| ΦS | 116 | 135 | 154 | 164 | 175 | 181 | 188 | 208 |
| T | 119 | 134 | 141 | 149.5 | 159.5 | 158.5 | 166 | 174.5 |
| U | 149 | 148 | 172.5 | 172.5 | 186.5 | 191 | 200 | 233.5 |
| V max | 22 | 22 | 25 | 25 | 23 | 31 | 31 | 31 |
| V min | -3 | -3 | -4 | -4 | -7 | -3 | -3 | -4 |
| W max | 42 | 45.5 | 51.5 | 51.5 | 53 | 58 | 59 | 63 |
| W min | 17 | 20.5 | 22.5 | 22.5 | 23 | 24 | 25 | 28 |
| Z | 5 | 5 | 8 | 8 | 5 | 8 | 8 | 8 |
| A1 | 8.5 | 8.5 | 11 | 11 | 11 | 13 | 13 | 14 |
| B1 | 107.5 | 107.5 | 122.5 | 122.5 | 133 | 136 | 143 | 170.5 |
| C1 | 25 | 25 | 25 | 25 | 35 | 32 | 32 | 32 |
| C2 | 25 | 28 | 28 | 28 | | 30 | 30 | 30 |
| E1 | M6 | M6 | M6 | M6 | M6 | M6 | M6 | M6 |
| F1DP' | M10 DP'20 | M10 DP'20 | M10 DP'20 | M10 DP'20 | M10 DP'20 | M10 DP'20 | M10 DP'20 | M12 DP'24 |
| G1 | 115.5 | 115.5 | 132.5 | 132.5 | 143.5 | 144 | 151 | 180 |
| J1 | 75 | 80 | 90 | 95 | 104 | 108 | 116 | 120 |
| K1 | 47 | 47 | 47 | 47 | 47 | 47 | 47 | 47 |
| L1 | 6 | 6 | 6 | 6 | 15 | 6 | 6 | 6 |
| L2 | 6 | 6 | 6 | 6 | | 6 | 6 | 6 |
| M1 | 52.5 | 57 | 72.5 | 82 | 85 | 92 | 102.5 | 117.5 |
| M2 | 47 | 52.5 | 69 | 77 | | 87 | 97 | 112 |
| Q | 105 | 118 | 145 | 155 | 160 | 168 | 168 | 190 |
| Q1 | M5DP'10 | M6DP'10 | M6DP'10 | M6DP'10 | M6DP'12 | M6DP'12 | M6DP'12 | M6DP'12 |
| S1 | G3/8 | G3/8 | G3/8 | G3/8 | G3/8 | G3/8 | G3/8 | G3/8 |
| T1 | 7 | 7 | 8 | 8 | 8 | 9 | 9 | 9 |
| W1 | M52x1.5p | M60x1.5p | M74x1.5p | M84x2.0p | M89x2.0p | M94x2.0p | M104x2.0p | M120x2.0p |
| ΦX1 | 50 | 58 | 71 | 81 | 86 | 91 | 101 | 117 |
| Y1 | 24 | 21 | 24 | 25 | 25 | 26 | 26 | 34 |
| U1 | 6 | 5 | 5 | 5 | 6 | 5 | 6 | 6 |
| Z1 | 6-M8x90 | 6-M8x90 | 6-M10x100 | 6-M10x100 | 6-M10x110 | 6-M10x105 | 6-M10x110 | 6-M10x135 |